

## WELCOME! WE WILL BEGIN SHORTLY!!

### Participants will be muted upon entry.

When the line is opened, please mute yourself during discussion/questions if not speaking

Please use the Chat Box to submit questions and share announcements!



This meeting will be recorded...Presentation and recording will be posted at [www.hclhic.org](http://www.hclhic.org)

For additional information or questions contact  
[lhic@howardcountymd.gov](mailto:lhic@howardcountymd.gov)

Promote. Preserve. Protect.

[www.hclhic.org](http://www.hclhic.org)

@hclhic



1



## Howard County Local Health Improvement Coalition

### Full Coalition Meeting

October 20, 2022

### Howard County LHIC

Local Health Improvement Coalition



Promote. Preserve. Protect.

[www.hclhic.org](http://www.hclhic.org)

@hclhic

2

## GOAL & AGENDA

---

**GOAL:** Present updates on HCLHIC workgroup activities and collaborative partner initiatives in support of the Healthy Beginnings, Healthy Living and Healthy Minds priorities.

**AGENDA:**

- A. Welcome & Introductions
- B. Movement Initiatives
- C. Food & Nutrition Security Initiatives
- D. Chronic Disease Initiatives
- E. Member Announcements
- F. Next Steps and Wrap-up

**Howard County LHIC**  
Local Health Improvement Coalition

[www.hclhic.org](http://www.hclhic.org)

[@hclhic](https://twitter.com/hclhic)

3

---

**Please use the Chat Box or Raise your Hand to ask questions**

Presentations and recording will be posted at  
[www.hclhic.org](http://www.hclhic.org)

For additional information or questions contact  
[lhic@howardcountymd.gov](mailto:lhic@howardcountymd.gov)

**Howard County LHIC**  
Local Health Improvement Coalition

[www.hclhic.org](http://www.hclhic.org)

[@hclhic](https://twitter.com/hclhic)

4

## WELCOME & OPENING REMARKS

---

# Welcome

New Members and Guests

Opening Remarks:

Howard County Health Department  
Howard County General Hospital

**Howard County LHIC**  
Local Health Improvement Coalition

[www.hclhic.org](http://www.hclhic.org)

[@hclhic](https://twitter.com/hclhic)

5

## MOVEMENT INITIATIVES

---

- Office of Transportation Infrastructure Update  
*Chris Eatough, Howard County Office of Transportation*
- Walktober 2022 Update  
*Natalie Hall, Howard County Health Department*

**Howard County LHIC**  
Local Health Improvement Coalition

[www.hclhic.org](http://www.hclhic.org)

[@hclhic](https://twitter.com/hclhic)

6

# Howard County Local Health Improvement Coalition

October 20, 2022



Howard County  
OFFICE OF TRANSPORTATION

Chris Eatough  
Bicycle and Pedestrian Coordinator  
ceatough@howardcountymd.gov

7

## WALKHOWARD — moving forward —



Howard County Pedestrian Master Plan

8



# Infrastructure Recommendations

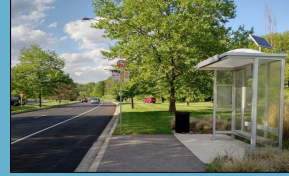
## Sidewalks

New sidewalk: 212 linear miles, 1,044 locations  
Sidewalk Repair: 31.8 linear miles, 492 locations



## Bus Stops

Add ADA Element (e.g. landing pad): 421 locations  
Add Safety Element (e.g. lighting): 90 locations



## Intersections

Curb Ramps: 512 build new or upgrade  
Crosswalks: 67 repair or replace  
Shorten Crossing Distance:  
53 pedestrian refuges or curb extensions



9

Howard County  
Capital Budget,  
Outyear Funding  
for Transit, Bike,  
Pedestrian  
Infrastructure

Project #	Project Name in Capital Budget	FY 23	FY 24	FY 25	FY 26	FY 27	FY 24-27
C0332	Bus Stop Improvements	\$150	\$50	\$50	\$50	\$50	\$200
C0353	Transit Center	\$0	\$0	\$0	\$0	\$0	\$0
	<b>Transit Subtotal</b>	<b>\$150</b>	<b>\$50</b>	<b>\$50</b>	<b>\$50</b>	<b>\$50</b>	<b>\$200</b>
K5035	School Route Pathways or Sidewalks	\$500	\$175	\$175	\$300	\$0	\$650
K5036	Routine Sidewalk Extensions	\$370	\$100	\$100	\$100	\$100	\$400
K5043	Sidewalk Repair Program	\$1,200	\$1,000	\$1,000	\$1,000	\$1,000	\$4,000
K5054	Roadside Improvement Program	\$630	\$500	\$500	\$500	\$500	\$2,000
K5061	Pedestrian Plan Projects	\$500	\$500	\$400	\$400	\$0	\$1,300
K5062	State Road Sidewalk Retrofit	\$250	\$75	\$75	\$75	\$75	\$300
K5063	North Laurel Road Sidewalk	\$145	\$675	\$0	\$0	\$0	\$675
K5068	ADA Ramps Upgrade Program	\$1,000	\$1,000	\$1,000	\$1,000	\$1,500	\$4,500
K5069	Bituminous Curb and Gutter Replacement Program	\$400	\$600	\$600	\$600	\$900	\$2,700
T7088	School Crosswalk Improvements	\$50	\$50	\$50	\$50	\$50	\$200
	<b>Ped Subtotal</b>	<b>\$5,045</b>	<b>\$3,025</b>	<b>\$2,250</b>	<b>\$2,375</b>	<b>\$4,125</b>	<b>\$11,775</b>
K5066	Bike Master Plan	\$2,650	\$1,000	\$1,000	\$1,000	\$1,000	\$4,000
T7107	Patuxent Branch Trail Extension	\$150	\$1,000	\$0	\$0	\$0	\$1,000
N3963	Pathway Rehab (Patuxent Branch Trail Surface Upgrade)	\$300	\$400	\$250	\$250	\$250	\$1,150
T7108	Clarksville Streetscape Project	\$100	\$1,870	\$935	\$0	\$0	\$2,805
	<b>Bike and Shared Use Path Subtotal</b>	<b>\$3,200</b>	<b>\$4,270</b>	<b>\$2,185</b>	<b>\$1,250</b>	<b>\$1,250</b>	<b>\$8,955</b>
	<b>Total County Capital Funding</b>	<b>\$8,395</b>	<b>\$7,345</b>	<b>\$4,485</b>	<b>\$3,675</b>	<b>\$5,425</b>	<b>\$20,930</b>
	<b>Estimated Grant Contributions</b>		<b>\$1,600</b>	<b>\$2,000</b>	<b>\$4,000</b>	<b>\$2,800</b>	<b>\$10,400</b>

10

## Current Project Priority Areas

### US Route 1

- 4 priority projects from Safety Evaluation, now in construction. \$3.5 million of MDOT/SHA funding.
- Elkridge to Guinness pathway, in design under BMC. \$1.25 million of state funds provided to Howard County.
- Cedar Avenue to Crestmont sidewalks being done by SHA (\$1.7 million)
- MDOT/SHA designing improvements for pinch points at Deep Run (Jessup) and CSX tracks (Elkridge improvements).
- Safe Streets For All grant application, submitted a \$10 million grant application for comprehensive safety
- STIG Application – Submitted a \$1 million grant application for a US 1 Corridor On-Demand Transit Service Pilot.

### School Walk Zone Expansion Projects

- Rockburn ES
- Elkridge Landing MS/Elkridge ES
- Bonnie Branch MS/Ilchester ES
- Ellicott Mills MS/Veterans ES
- Long Reach HS
- HS 13
- Mount Hebron HS
- Centennial HS

### Major Pathway Projects

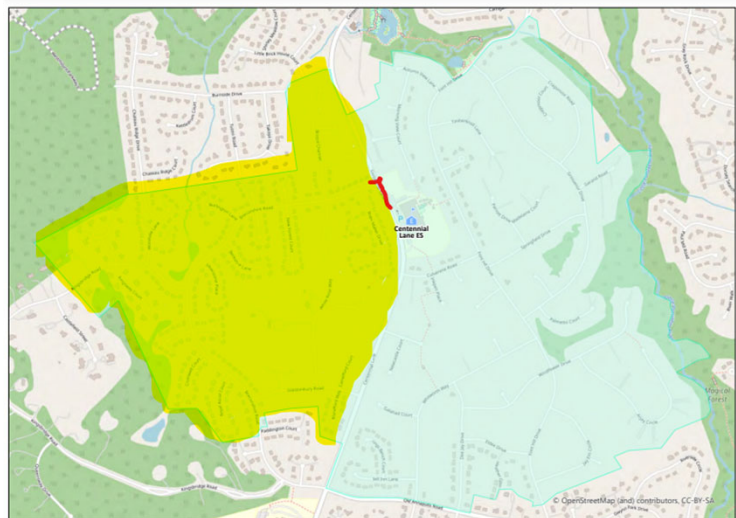
New Pathway	Length (miles)
Cedar Lane Pathway	0.5
Dobbin Road Pathway	2.0
Robert Fulton Pathway	1.1
Patuxent Branch Trail Phase 1 - South Entrance Trail	0.8
Patuxent Branch Trail Phase 2 – Extension to Lake Elkhorn	1.5
Patuxent Branch Trail Surface Upgrade	1.3
North Laurel Connections ( Mix of pathway & bike lanes)	3.7
BLP Park and Ride Pathway	0.3
<b>Total</b>	<b>11.2</b>

11

## Current Project Priority Areas

### School Walk Zone Expansion Projects

- Rockburn ES
- Elkridge Landing MS/Elkridge ES
- Bonnie Branch MS/Ilchester ES
- Ellicott Mills MS/Veterans ES
- Long Reach HS
- HS 13
- Mount Hebron HS
- Centennial HS

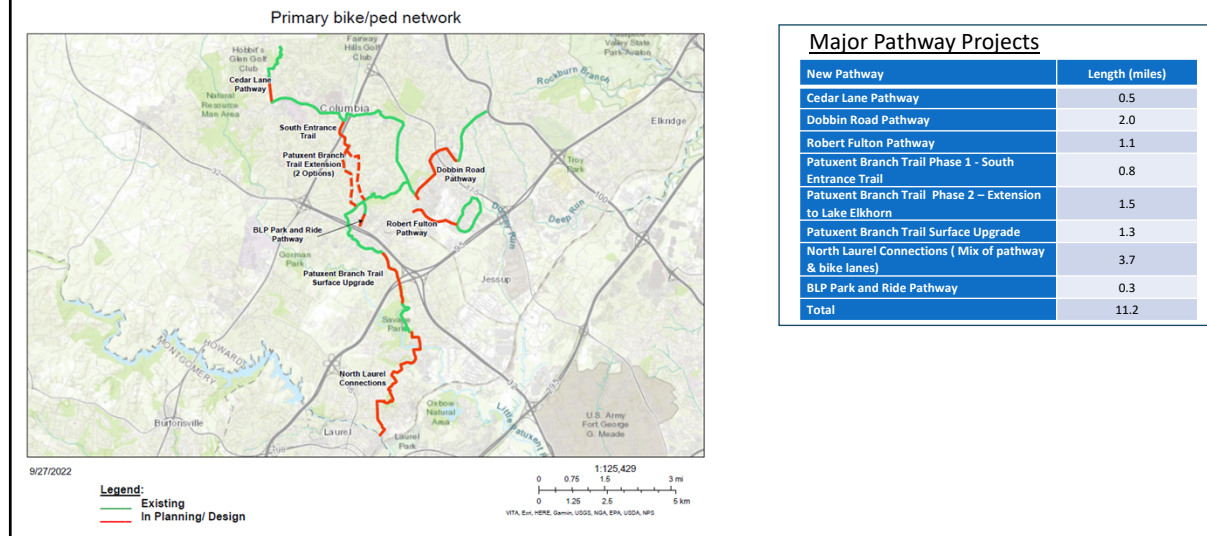


**Centennial Lane ES**  
Elementary School Walk Areas  
2021-22

The information shown on this map is only to be used as a guide for school walk areas. The data is not intended to be used for any other purpose. The data is not intended to be used for any other purpose. The data is not intended to be used for any other purpose.

12

## Current Project Priority Areas



13



14





15



Questions?

16

## JOIN WALKTOBER 2022



Howard County—Let's Walk, Roll, Ride, MOVE!

When: October 1 - 31, 2022

Learn more:

[howardcountymd.gov/walktober22](http://howardcountymd.gov/walktober22)



**Howard County LHIC**  
Local Health Improvement Coalition

[www.hclhic.org](http://www.hclhic.org)

[@hclhic](https://twitter.com/hclhic)

17

## Please use the Chat Box or Raise your Hand to ask questions

Presentations and recording will be posted at  
[www.hclhic.org](http://www.hclhic.org)

For additional information or questions contact  
[lhic@howardcountymd.gov](mailto:lhic@howardcountymd.gov)

**Howard County LHIC**  
Local Health Improvement Coalition

[www.hclhic.org](http://www.hclhic.org)

[@hclhic](https://twitter.com/hclhic)

18

## FOOD & NUTRITION SECURITY INITIATIVES

- Howard County Food Security Committee Update  
*Reena Rambharat, Howard County Health Department*
- Horizon Foundation's Healthier Choices Coalition  
*Glenn Schneider and Alice, Horizon Foundation*

**Howard County LHIC**  
Local Health Improvement Coalition

[www.hclhic.org](http://www.hclhic.org)

[@hclhic](https://twitter.com/hclhic)

19

## Howard County Food Security Update



### Media Release

FOR IMMEDIATE RELEASE  
June 8, 2022

**Media Contact:**  
Lisa M. de Hernández  
Director of Communications & Public  
Information  
W: 410.313.6353 M: 410.428.7294  
[ldehernandez@howardcountymd.gov](mailto:ldehernandez@howardcountymd.gov)

#### Howard County Local Health Improvement Coalition Receives State Award to Address Food Insecurity

**Columbia, MD** – The Howard County Local Health Improvement Coalition (HCLHIC) has received a \$20,000 award from the Maryland Department of Health's (MDH) Center for Chronic Disease Prevention & Control (CCDPC) to establish a committee to address food insecurity in Howard County. This newly-formed HCLHIC committee will work to implement food security initiatives among priority populations.

**Howard County LHIC**  
Local Health Improvement Coalition

[www.hclhic.org](http://www.hclhic.org)

[@hclhic](https://twitter.com/hclhic)

20

## Howard County Food Security Committee

- Feedback from residents impacted by food and nutrition insecurity
- Feedback from partners and other Committees
  - Resource Guide & Brochure of Food Resources in Howard County
- Host Food and Nutrition Security Roundtable in Spring
  - Identify gaps and potential solutions
- Draft plan for addressing Food and Nutrition Security
  - Determine goals, objectives and activities of Committee
  - Incorporate in Strategic Plan

21

## Horizon Foundation's Healthier Choices Coalition



22

## Community-Based Beverage Campaign

How Maryland's **Howard County Unsweetened** campaign encouraged residents to purchase fewer sugary drinks



**Howard County LHIC**  
Local Health Improvement Coalition

[www.hclhic.org](http://www.hclhic.org)

[@hclhic](https://twitter.com/hclhic)

23

## BREAK – 5 MINUTES



**Howard County LHIC**  
Local Health Improvement Coalition

[www.hclhic.org](http://www.hclhic.org)

[@hclhic](https://twitter.com/hclhic)

24



## CHRONIC DISEASE INITIATIVES

---

- Chronic Disease Prevention & Management Group Update  
*Vanda Lerdboon, Howard County Health Department*
- University of Maryland's Cancer Outreach and Training Presentation  
*Briana Hudson, University of Maryland School of Public Health*

25

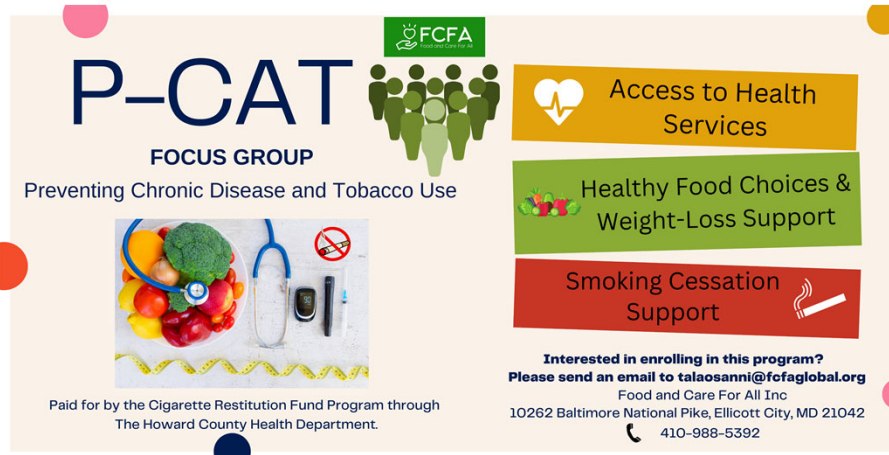
## Chronic Disease Prevention & Management Group Update

---

- Goal: Increase culturally appropriate, accessible and inclusive education on chronic disease prevention and support for management of chronic diseases and related health conditions in Howard County.
  - Residential community outreach and activities in support of place-based initiatives
  - Coordinated planning/promotion of evidence-based chronic disease management courses
  - Community-based partnership strategies and activities

26

## PREVENTING CHRONIC DISEASES AND TOBACCO USE in HC (P-CAT)



**P-CAT**  
FOCUS GROUP  
Preventing Chronic Disease and Tobacco Use

**FCFA**  
Food and Care For All Inc.

**Access to Health Services**

**Healthy Food Choices & Weight-Loss Support**

**Smoking Cessation Support**

**Interested in enrolling in this program?**  
Please send an email to [talaosanni@fcfaglobal.org](mailto:talaosanni@fcfaglobal.org)  
Food and Care For All Inc  
10262 Baltimore National Pike, Ellicott City, MD 21042  
410-988-5392

Paid for by the Cigarette Restitution Fund Program through  
The Howard County Health Department.

**Howard County LHIC**  
Local Health Improvement Coalition

[www.hclhic.org](http://www.hclhic.org)

[@hclhic](https://twitter.com/hclhic)

27

University of Maryland Greenebaum  
Comprehensive Cancer Center



## Office of Community Outreach and Engagement

Euldgd Kxgvrq/P SK  
Surjudp P dgdjhu

5355

28

## Overview

- 01 Office of Community Outreach and Engagement  
Dlp v/uhvrxufhv/dqg lq iudvwxfwxiuh
- 02 UMGCCC Catchment Area  
Fdqfhuhs lghp lra jlf gdwd>qhhgv dvvhvvp hqwgdd
- 03 Key Cancer Education and Outreach Activities

5355

29

University of Maryland Greenebaum Comprehensive Cancer Center

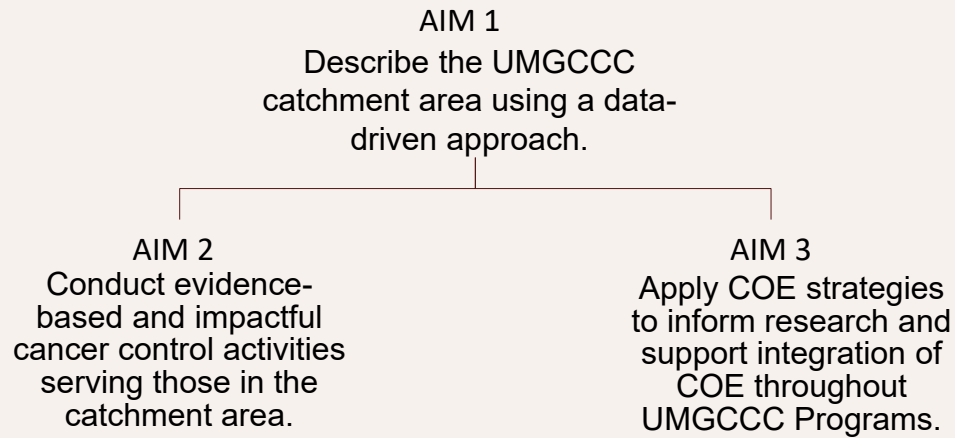
FRHR yhuylhz

## Office of Community Outreach and Engagement

Our goal is to apply COE strategies to inform UMGCCC research and make an impact along the cancer continuum in the catchment area, with a particular focus on eliminating cancer disparities.

30

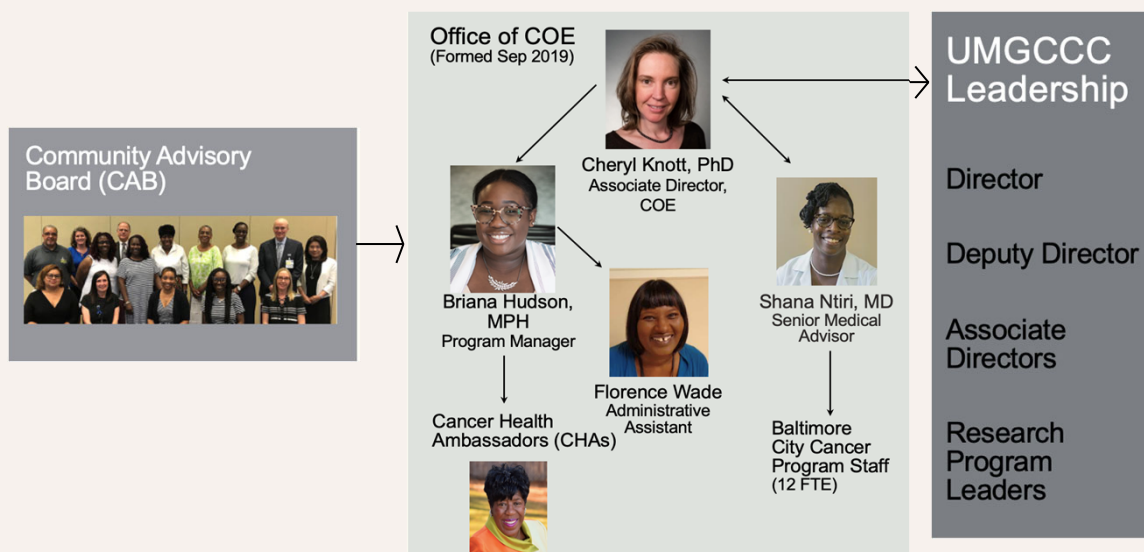
## COE AIMS



COE Overview

31

## COE Team and Interactions with Community and UMGCCC Leadership



32

## COE Website

<https://www.umms.org/umgccc/community>

### Community Outreach and Engagement

- [What We Do](#)
- Read the latest [UMGCCC Community Outreach and Engagement Quarterly Newsletter](#)
- Learn more about our [Cancer Clinical Trials](#)

The University of Maryland Marlene and Stewart Greenebaum Comprehensive Cancer Center (UMGCCC) shows its commitment to the Maryland community by providing a team-based approach to care, innovative clinical trials, education and support services, and free cancer screenings through the Baltimore City Cancer Program (BCCP). Community Outreach and Engagement (COE) was created to further expand upon the UMGCCC's effort in promoting cancer health equity.

Our goal is to apply COE strategies to inform UMGCCC research and make an impact along the cancer continuum in the catchment area, with a particular focus on eliminating cancer disparities. The aims of COE are to:

1. Describe the UMGCCC catchment area using a data-driven approach
2. Conduct evidence-based and impactful cancer control activities serving those in the catchment area
3. Apply COE strategies to inform research and support integration of COE throughout



#### Community

Partnerships

Research Projects

Outreach and Engagement Team



33

## Community Advisory Board



The UMGCCC values the participation of community stakeholders and contributions of their expert knowledge and experience working with the Greater Baltimore area community to improve the community outreach and engagement through the community advisory board.

This dynamic group of community leaders, cancer survivors, organization members and researchers will enhance the development, dissemination and advancement of our efforts to improve our community's health and well being.

34

## UMGCCC Catchment Area

**Population** 5.1M

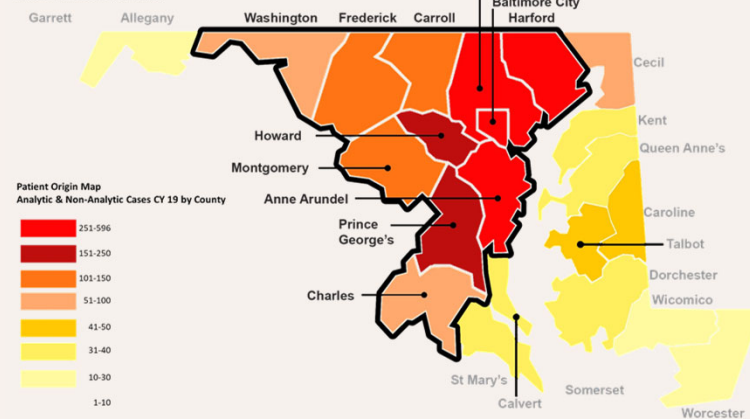
**White** 53%

**Black** 32%

**Other** 12%

**Multi Racial** 3%

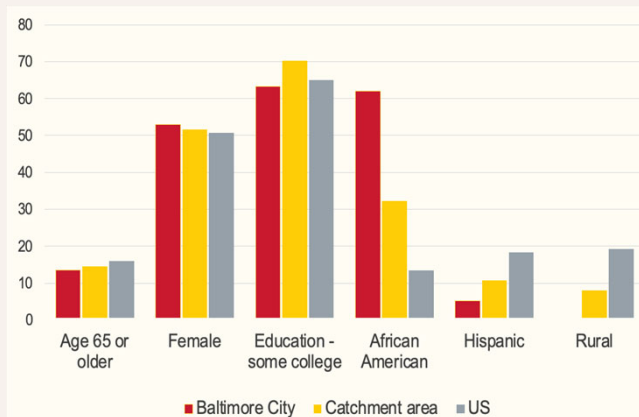
**Catchment Area**



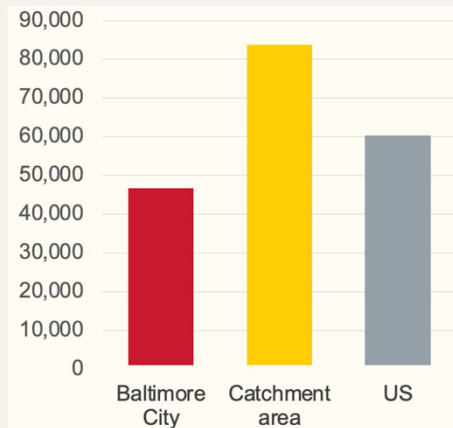
35

## Catchment Area Characteristics

**Demographics**



**Median Household Income**



36

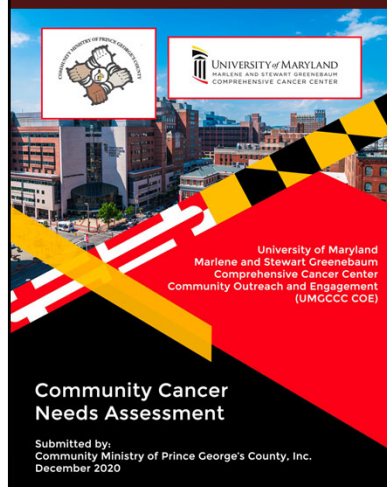
## UMGCCC Priority Cancers

	Cancer Incidence				Cancer Mortality			
	Baltimore City	Catchment Area	Maryland	U.S.	Baltimore City	Catchment Area	Maryland	U.S.
All	486.3	435.2	443.4	428.6	228.3	164.1	165.4	161.3
Lung	78.2	54.2	56.6	53.1	61.6	41.5	43.1	42.2
Prostate	137.4	125.8	125.4	97.6	32.8	20.9	20.3	19.1
Breast	122.3	129.7	130.3	124.9	29.2	23.2	22.9	20.5
Colorectal	45.2	36.3	36.7	38.9	21.8	14.7	14.5	14.1
Cervix	10.1	6.5	6.4	7.4	4.4	2.3	2.0	2.3
Oral and pharynx	12.9	10.0	10.5	11.3	4.0	2.3	2.3	2.5
Melanoma	9.7	20.0	21.4	23.6	1.9	2.4	2.5	2.6

>10% above Maryland level
  Below Maryland level

37

## Community Cancer Needs Assessment



G hvfuleh wkh  
fdq fhu  
nqr z dngjh/  
ehdhiv/dqg  
sukruwhv lq wkh  
X P J FFF  
fdwfkp hqwdud

X vh wkh gdwd  
wr lqirup FRH  
sukruwhv lq  
Dlp v 5 dqg 6

8 :: fdwfkp hqwdud  
uhvghqw frp sdwhg  
dq rqqh vxuyh | lq  
DxjWhsw/5353

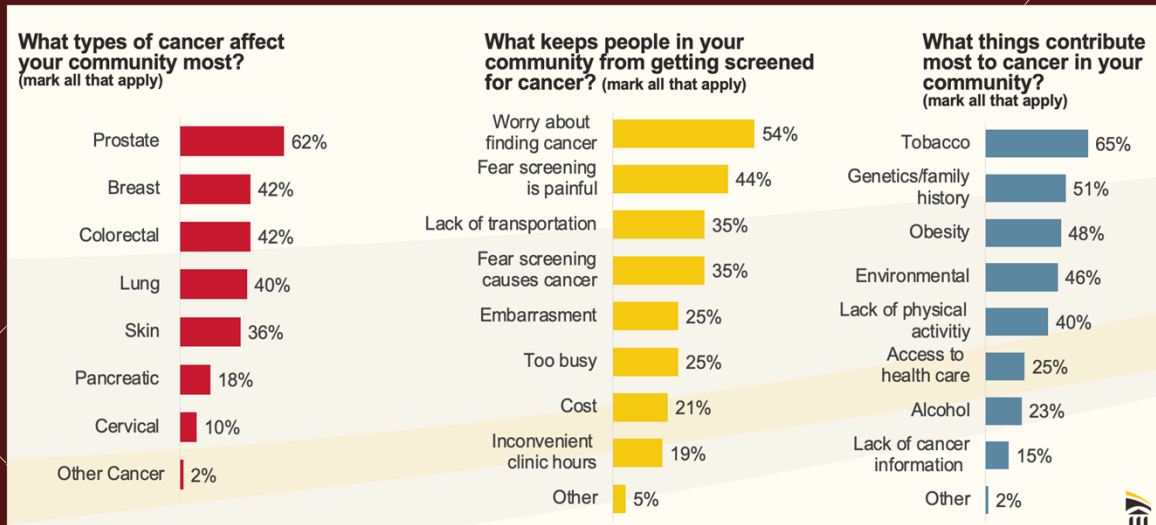
Purpose

Method

38



## Community Cancer Needs Assessment



39

## Community Health Advisor Training

University of Maryland Marlene & Stewart Greenbaum Comprehensive Cancer Center  
Office of Community Outreach and Engagement

### Community Health Advisor Training

Are you an adult living in Anne Arundel, Baltimore, Carroll, Charles, Frederick, Harford, Howard, Montgomery, Prince George's or Washington County?

If so, you can become a certified Community Health Advisor to share information about breast, prostate, colorectal, and lung cancer screening with your community!

Date: Saturday, June 25, 2022  
Time: 11:00 AM - 2:45 PM

**Register Now!**  
<https://umcphh.org/registration/register?tr=communityhealthadvisor-20220625>

Receive up to \$200 for attending trainings and becoming certified!

UMCPHHS - 100204

J r d e W u d l q d q g  
f h u w l i | 4 3 3  
u h v l g h q w l q w k h  
f d w f k p h q w d u h d

F r q g x f w l q j  
S u r m f w K H D O  
F r p p x q l w |  
K h d o k D g y l v r u  
W u d l q l q j v  
w k u r x j k r x w w k h  
f d w f k p h q w d u h d

W u d l q h h v f d q u h f h l y h  
x s w r ' 5 3 3 l q  
f r p s h q v d w l r q

40



## Annual Outreach Calendar

Timeline	Jan.	Feb.	Mar.	Apr.	May	Jun.	Jul.	Aug.	Sept.	Oct.	Nov.	Dec.
Cervical Cancer Month	X											
Black History Month		X										
National Cancer Prevention Month		X										
Women's History/ Gender Equality Month			X									
Colon Cancer Awareness Month			X									
Kidney Cancer Awareness Month			X									
Multiple Myeloma Awareness Month												
HPV Vax Day- March 4th			X									
Diversity Month				X								
Testicular Cancer Awareness Month				X								
Head and Neck Cancer Awareness Month				X								
Esophageal Cancer Awareness Month				X								
Minority Health Month				X								
Asian Pacific Heritage Month					X							
National Cancer Research Month					X							
Brain Cancer Awareness					X							
Melanoma and Skin Cancer Awareness Month					X							
Bladder Cancer Awareness Month					X							
Mother's Day- Focus on breast, colon, and cervical cancers					X							

41

## Quarterly Newsletter

NEWSLETTER

MARCH 2022

# Community Chat

Office of Community Outreach and Engagement

*In This Issue*

**Prioritizing Health During the Pandemic, P.1**

**Cancers of the Month: Kidney, & Myeloma, P. 2**


**Nutrition, P.3**

**New Program Manager, P.4**

**Project HEAL, P.4**

**Recipe Corner, P.5**


**Community Resources, P.6**



## Take Care of Yourself during the Pandemic

Many people are feeling stressed, especially with the extra pressure on us because of the pandemic. What are some things you can do for yourself during this time?

- Consider getting some exercise, whether it's walking, doing yoga at home, or going up and down stairs in your house or apartment to keep fit. Physical activity can make you feel less tired, happier, and calmer!
- Try to get enough sleep, and keep a regular sleep schedule.
- Healthy foods will also help you feel better.
- Connect with friends and family by phoning, Zooming, texting, or Skyping. Share your feelings, get support, and give support!
- Relax with music, take care of pets or indoor or outdoor plants, or enjoy a new hobby.



UNIVERSITY of MARYLAND  
HARLENE AND STEWART GREENBAUM  
COMPREHENSIVE CANCER CENTER

Connect With Us  
Facebook: @umgcc  
Twitter: @umgcc  
www.umgcc.org/community  
umgcc-outreach@som.umaryland.edu

01

NEWSLETTER | COE

42

## Community Request for Materials and Speakers

**Is your organization in need of cancer-related materials or in search of speakers to present to your community?**

The UMGCCC Community Outreach and Engagement team can help. Please visit our community request form:

[https://umdsurvey.umd.edu/jfe/form/SV\\_1BrB4gtMVW22DWZ](https://umdsurvey.umd.edu/jfe/form/SV_1BrB4gtMVW22DWZ)

43

## Community Request for Materials and Speakers



[https://umdsurvey.umd.edu/jfe/form/SV\\_1BrB4gtMVW22DWZ](https://umdsurvey.umd.edu/jfe/form/SV_1BrB4gtMVW22DWZ)

44

- Join our listserv: [umgccc-outreach@som.umaryland.edu](mailto:umgccc-outreach@som.umaryland.edu)
- Visit our website: [www.umgccc.org/community](http://www.umgccc.org/community)
- Request support:  
[https://umdsurvey.umd.edu/jfe/form/SV\\_1BrB4gtMVW22DWZ](https://umdsurvey.umd.edu/jfe/form/SV_1BrB4gtMVW22DWZ)
- Contact Dr. Knott ([cholt14@umd.edu](mailto:cholt14@umd.edu)) or Briana Hudson ([bdhudson@umd.edu](mailto:bdhudson@umd.edu))

Thank You!

45

---

**Please use the Chat Box or Raise your  
Hand to ask questions**

Presentations and recording will be posted at  
[www.hclhic.org](http://www.hclhic.org)

For additional information or questions contact  
[lhic@howardcountymd.gov](mailto:lhic@howardcountymd.gov)

46

# Member Announcements, Resource Sharing and Networking

**Howard County LHIC**  
Local Health Improvement Coalition

[www.hclhic.org](http://www.hclhic.org)

@hclhic

47



## Older Adult Mental Health Forum Tuesday, October 25, 2022 11:00am - 12:30pm October Presentation: Medicaid Community Programs

Join us for the October meeting! Please use the link below to register and receive the Webex link.

The October speaker is Puja Shukla, Director of State Hospital Discharge, Behavioral Health Administration, State of Maryland. She will present, "Home and Community Based Services For Older Adults". Puja is an expert on Medicaid waiver and community programs. Her presentation will particularly focus on older adult mental health and access to these programs.

The October speaker time will be extended to allow for the material and the question/answer time. Please bring your questions!

If time permits a case review will be included. Case review is a unique way to problem-solve, find resources, or make new connections! This is a facilitated discussion. If you would like to submit a case (past or present) for please contact Karen Hull.

Register here:

Older Adult Mental Health Forum  
Registration Link (Webex):

<https://howardcountymd.webex.com/howardcountymd/j.php?RGID=r49e51d68ca736fe484d5772f9f96b623>

Please share this announcement with your network!  
We look forward to seeing you on October 25!

For additional information please contact:

Karen Hull  
Howard County Office on Aging & Independence  
410-313-7466 (voice/relay)  
khull@howardcountymd.gov



## Mental Health First Aid

Nov. 3 ♦ 8:30 a.m. - 3:30 p.m.

Free ♦ Virtual via Zoom

For Faith Leaders who Live or Work in Howard County

*"Mental Health First teaches faith leaders appropriate and helpful responses to assist a person who may be in need of mental health support"*

Rev. Karen Morrow Reeve  
Chaplain Associate  
Howard County General Hospital



Register at [hcg.org/event](http://hcg.org/event)  
More Information: [HCGH-J2BH@jhmi.edu](mailto:HCGH-J2BH@jhmi.edu)



Howard County General Hospital offers Mental Health First Aid training to faith leaders who live or work in Howard County. Learn and practice the skills to identify, understand and respond to mental health and substance use crisis and non-crisis situations. Mental Health First Aid includes a self-paced online course and an instructor-led class held virtually via Zoom. Connect with other faith leaders as we discuss this critical community health issue in a safe and supportive environment.

**Howard County LHIC**  
Local Health Improvement Coalition

[www.hclhic.org](http://www.hclhic.org)

@hclhic

48

## Maryland Maternal Mortality Review Program RFA



DEPARTMENT OF HEALTH

Larry Hogan, Governor · Boyd K. Rutherford, Lt. Governor · Dennis R. Schrader, Secretary

### EXHIBIT A

#### STANDARD GRANT AGREEMENT (SGA) REQUEST FOR APPLICATIONS (RFA) (COMPETITIVE)

PROCUREMENT ID NUMBER – PHPA-2028 / BPM032131

Issue Date: October 17, 2022

Maryland Maternal Mortality Review Program: Preventing  
Maternal Mortality Through Community Collaborations

- Funding to organizations with qualifications to provide training to providers, nurses and those working in prenatal care; develop and implement programs that will improve Maternal Health; and join the efforts of decreasing Maternal Mortality Rates in Maryland.
- Applications due November 10, 2022, at 3:00pm

**Howard County LHIC**

Local Health Improvement Coalition

[www.hclhic.org](http://www.hclhic.org)

[@hclhic](https://twitter.com/hclhic)

49

## MEMBER ANNOUNCEMENTS

Please share any updates by typing them into the **Chat Box**.

You may also unmute your microphone to speak.

Thank you!

**Howard County LHIC**

Local Health Improvement Coalition

[www.hclhic.org](http://www.hclhic.org)

[@hclhic](https://twitter.com/hclhic)

50

## HCLHIC UPDATES – YEAR IN REVIEW

---

- 2022 Full Coalition Meetings review
  - January
  - April
  - July
- Summary
  - Strategic Plan and workgroups
  - Grants
  - New staff
  - Engagement

51

## NEXT STEPS & WRAP UP

---

### **2023 Quarterly Hybrid Full Coalition Meetings:**

#### **[Register](#)**

- January 19, 2023, 8:30-10:30am
- April 20, 2023, 8:30-10:30am
- July 20, 2023, 8:30-10:30am
- October 19, 2023, 8:30-10:30am

Presentations and recording will be posted at [www.hclhic.org](http://www.hclhic.org)

For additional information or questions contact [lhic@howardcountymd.gov](mailto:lhic@howardcountymd.gov)

52



Thank you

Community Engagement Team

[LHIC@howardcountymd.gov](mailto:LHIC@howardcountymd.gov)

## Howard County LHIC

Local Health Improvement Coalition



HOWARD COUNTY  
HEALTH DEPARTMENT



Promote. Preserve. Protect.

[www.hclhic.org](http://www.hclhic.org)

[@hclhic](https://twitter.com/hclhic)