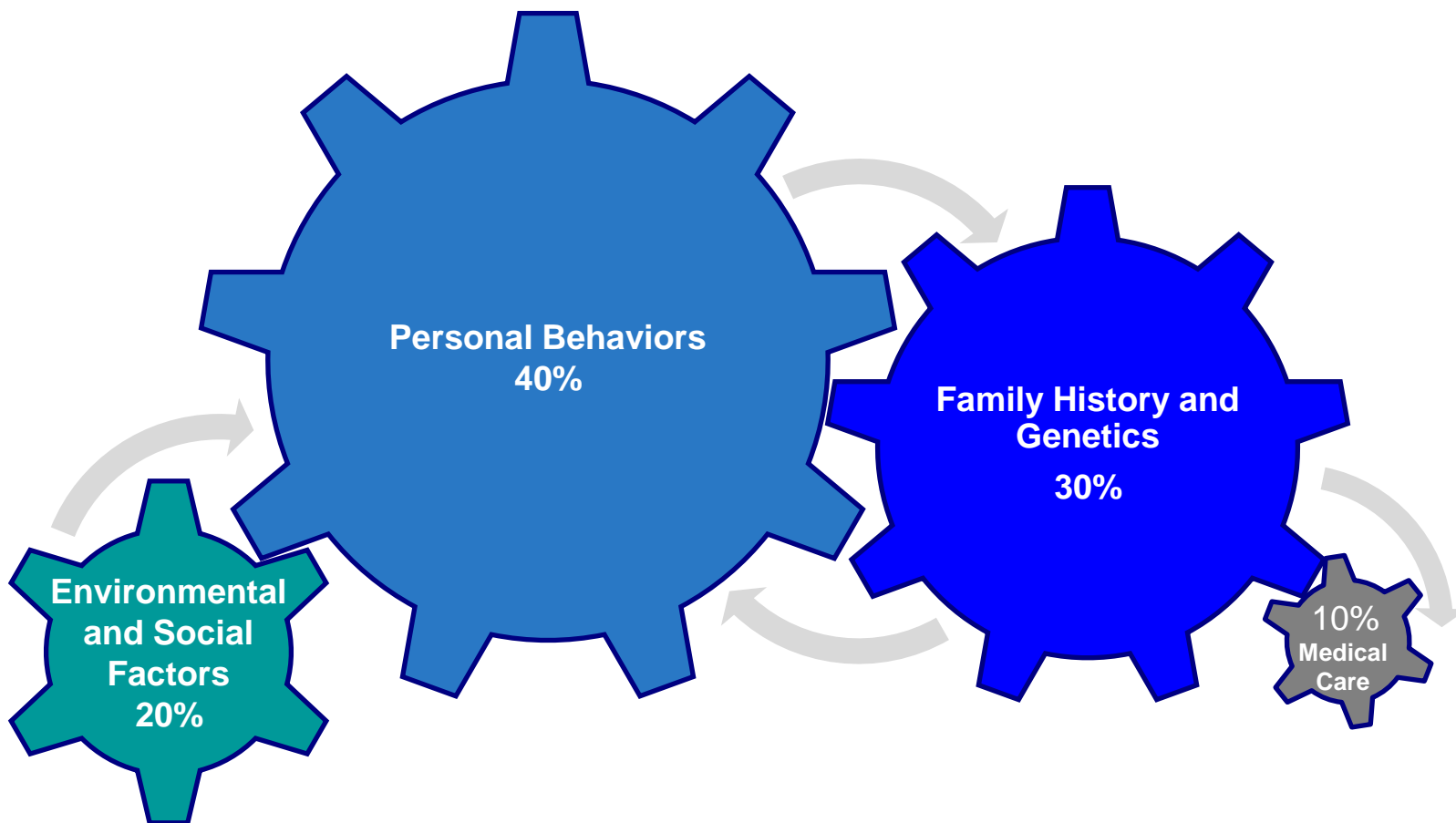


“Breath of Fresh Care”
Howard County Health Care Forum
Carmela Coyle
October 27, 2016



Health is About More Than Clinical Care

Health is driven by multiple factors that are intricately linked – of which medical care is one component.



Triple Aim



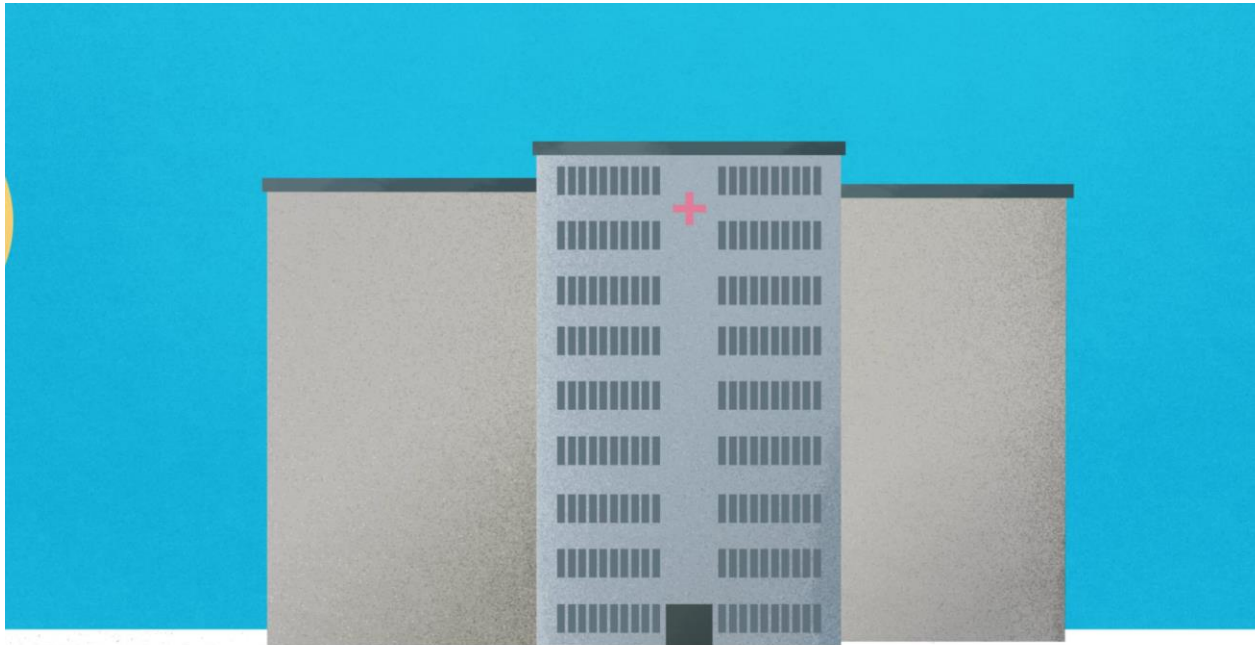
A Breath of Fresh Care

**PATIENT BILL OF RIGHTS
AND
COMPLIMENTS & CONCERNS**

**COMMUNITY HEALTH
PROGRAMS
FOR YOU**

RESOURCES FOR PATIENTS

Thanks to a commitment by Maryland's hospitals, in 2014 Maryland became one of the first states in the nation to implement a NEW proactive, community-based health care model. The vision: to help you get health and stay healthy for life.



“Breath of Fresh Care”
Howard County Health Care Forum
Carmela Coyle
October 27, 2016

